



## 3<sup>3</sup>-α-L-Arabinofuranosyl-xylotetraose plus 2<sup>3</sup>-α-L-Arabinofuranosyl-xylotetraose (XA<sup>3</sup>XX / XA<sup>2</sup>XX) (Lot 150905)

**O-XAXXMIX-10MG**

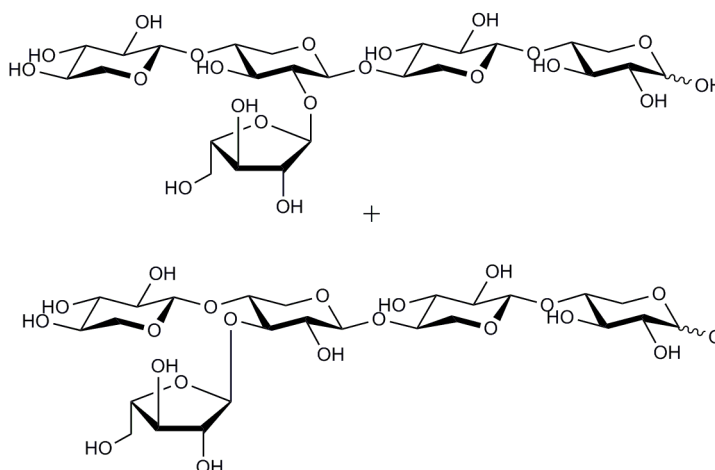
**11/15**

**Molecular**

**Formula:** C<sub>25</sub>H<sub>42</sub>O<sub>21</sub>

**MW:** 678.6

**CAS No.** 84666-93-3



**PREPARATION:**

Prepared by controlled enzymic hydrolysis of wheat flour arabinoxylan

**PURITY:** > 95%

**HPLC:**

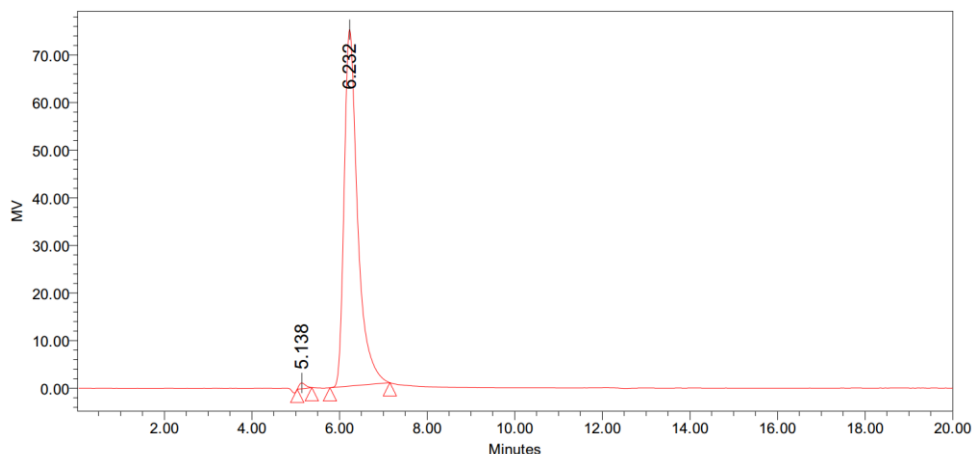
Column :- Waters SugarPak I (6.5 x 300 mm)

Temperature: 90°C

Mobile phase: dH<sub>2</sub>O with disodium calcium EDTA (50 mg/L) [Sigma Cat No. ED2SC]

Flow rate: 0.5 mL/min

HPLC System: Waters Breeze system, Waters 2410 RI detector and Empower v 2 software



**Peak Results**

Name	RT	Area	% Area	Height	% Height
1	5.138	12369	0.77	1235	1.62
2	6.232	1592074	99.23	74916	98.38

**HPAEC-PAD:**

Column: CarboPac PA200 guard and analytical columns (3 x 250 mm)

Temperature: 30°C

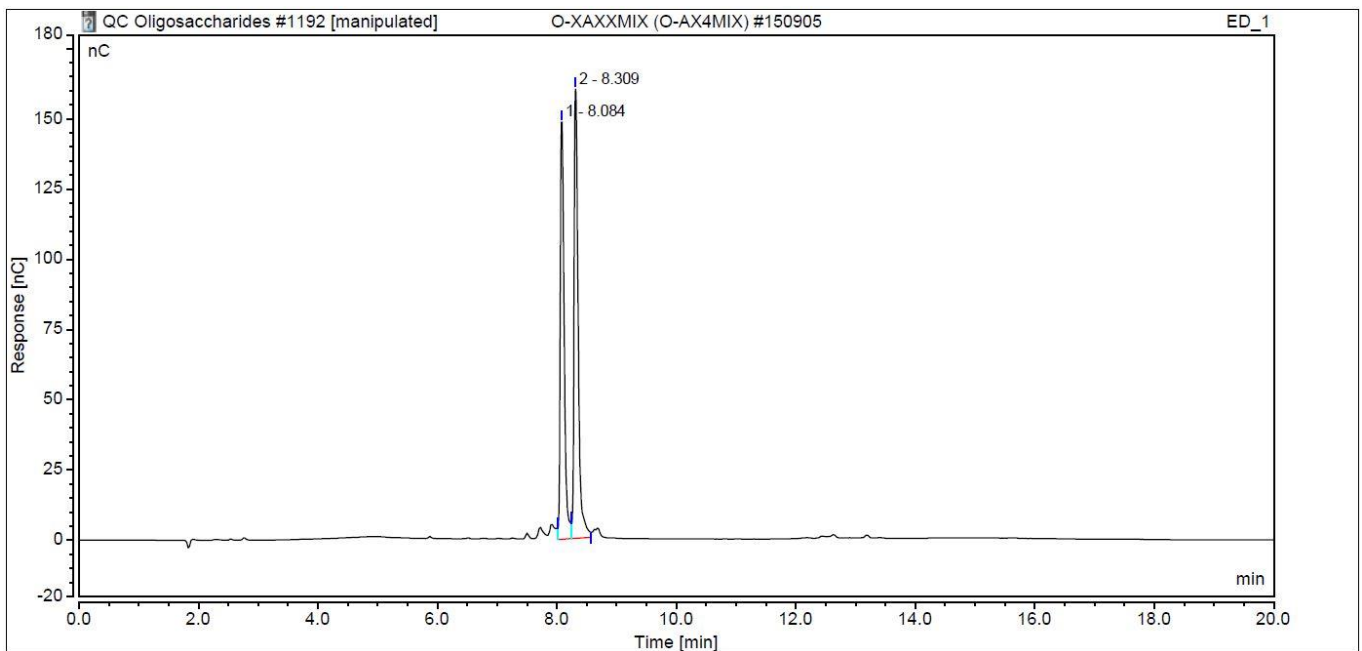
Detector: Au electrode; waveform Carbohydrate, standard quad

Flow rate: 0.5 mL/min

IC system: Dionex ICS5000+ DP system and Chromeleon 7 software

A stepwise linear gradient method was employed as shown.

Time (min)	100 mM NaOH (%)	120 mM NaOAc (%)
0	100	0
5	55	45
9	30	70
10	0	100

**TLC:** $n$ -Propanol : Ethanol : H<sub>2</sub>O = 7:1:2 (run once) on Merck TLC Silicagel 60F<sub>254</sub>