

XYLOTETRAOSE

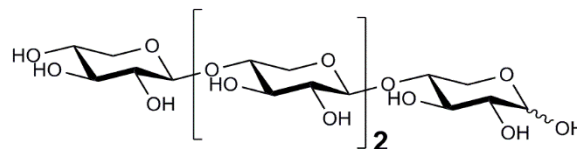
06/23

O-XTE

CAS: 22416-58-6

Molecular Formula: $C_{20}H_{34}O_{17}$

MW: 546.47



This oligosaccharide is not a certified reference material. The purity stated for this compound in the relevant Certificate of Analysis is not a % w/w purity, but a purity based on the HPLC peak area relative to other oligosaccharide compounds visible in the chromatograph.

Refer to the product lot number Certificate of Analysis for lot specific properties.

PREPARATION: Prepared by controlled acid hydrolysis of arabinoxylan.