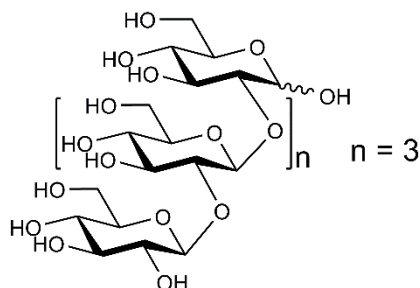


## SOPHOROPENTAOSE

06/23

## O-SOPH5

**CAS:** N/A  
**Molecular Formula:**  $C_{30}H_{52}O_{26}$   
**MW:** 828.7



This oligosaccharide is not a certified reference material. The purity stated for this compound in the relevant Certificate of Analysis is not a % w/w purity, but a purity based on the HPLC peak area relative to other oligosaccharide compounds visible in the chromatograph.

Refer to the product lot number Certificate of Analysis for lot specific properties.