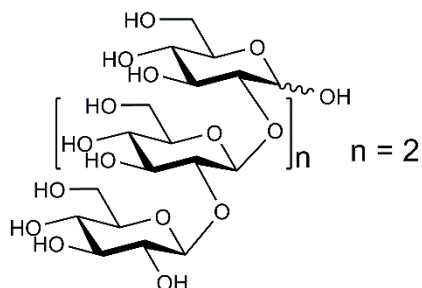


## SOPHOROTETRAOSE

06/23

## O-SOPH4

CAS: N/A  
Molecular Formula:  $C_{24}H_{42}O_{21}$   
MW: 666.6



This oligosaccharide is not a certified reference material. The purity stated for this compound in the relevant Certificate of Analysis is not a % w/w purity, but a purity based on the HPLC peak area relative to other oligosaccharide compounds visible in the chromatograph.

**Refer to the product lot number Certificate of Analysis for lot specific properties.**