

SOPHOROTRIOSE

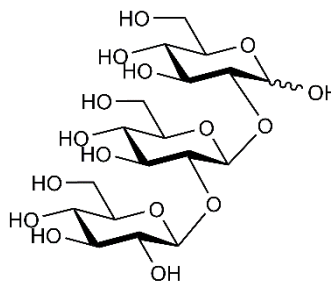
06/23

O-SOPH3

CAS: 32581-40-1

Molecular Formula: $C_{18}H_{32}O_{16}$

MW: 504.4



This oligosaccharide is not a certified reference material. The purity stated for this compound in the relevant Certificate of Analysis is not a % w/w purity, but a purity based on the HPLC peak area relative to other oligosaccharide compounds visible in the chromatograph.

Refer to the product lot number Certificate of Analysis for lot specific properties.