



## 4-NITROPHENYL- $\beta$ -LAMINARITETRAOSIDE (Lot 1505AL3-152)

O-PNPLAM4

05/15

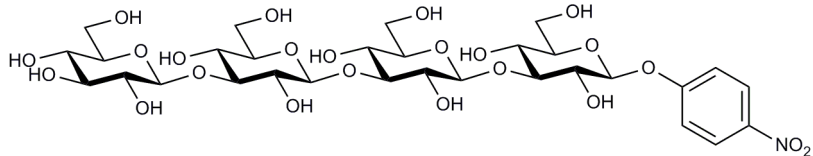
Synonym: *p*-Nitrophenyl- $\beta$ -laminaritetraoside, *p*NP- $\beta$ -laminaritetraoside

CAS: 106678-65-3

Molecular

Formula:  $C_{30}H_{45}NO_{23}$

MW: 787.67



PURITY: > 98%

### HPLC:

Column :- Acclaim 120 C18, 3  $\mu$ m (3 x 150 mm)

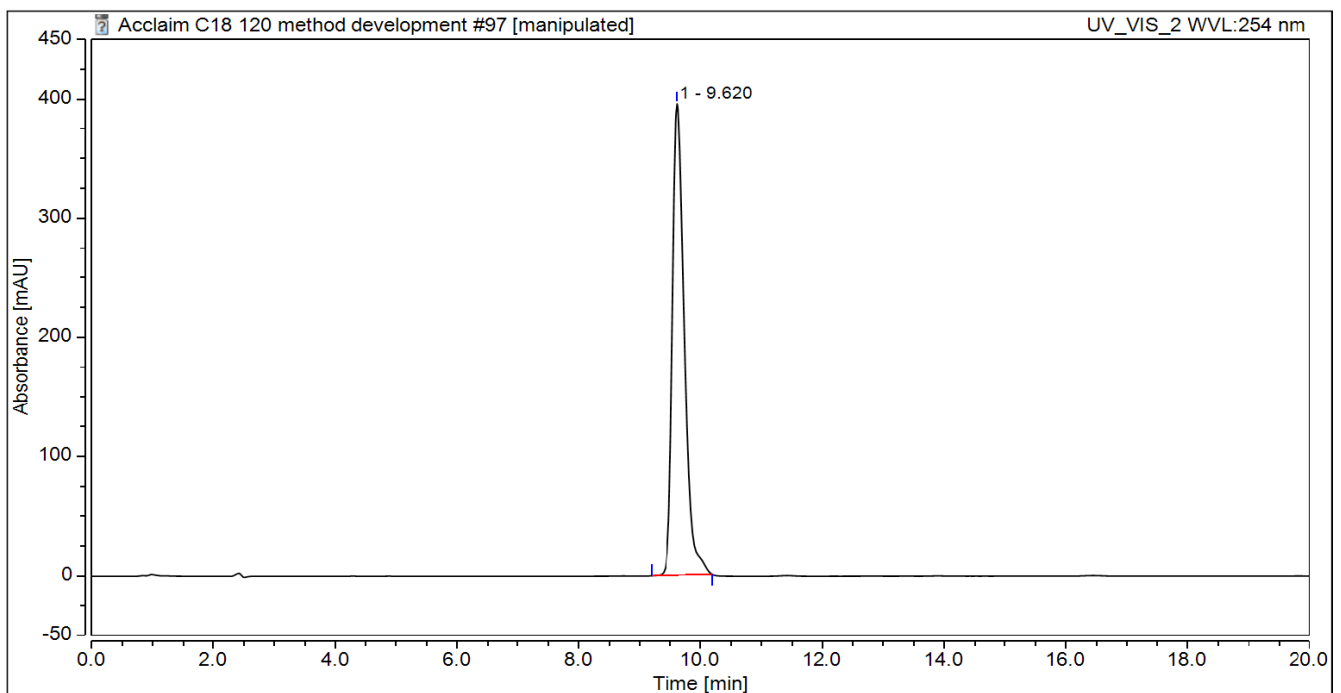
Temperature :- 55°C

Flow rate :- 0.4 mL/min (Eluent gradient shown below)

Detector :- UV (256 nm)

HPLC System :- Thermofisher U3000 Ultimate and Chromeleon v 7.0 software

Time (min)	H <sub>2</sub> O (%)	CH <sub>3</sub> CN (%)
0	90	10
1	90	10
13	80	20
15	90	10
20	90	10



# <sup>1</sup>H-NMR:

A Bruker Avance 400 was employed for <sup>1</sup>H NMR spectra (400.13 MHz). Resonances,  $\delta$ , are in ppm units downfield from an internal reference in C<sub>2</sub>D<sub>6</sub>SO ( $\delta_{\text{H}} = 2.50$ ).

