

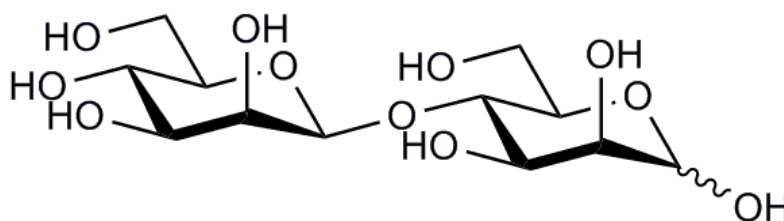


MANNOBIOSE (Lot 190802)

O-MBI

09/19

Molecular Formula: $C_{12}H_{22}O_{11}$
MW: 342.3
CAS: 14417-51-7



PREPARATION:

Prepared by controlled enzymic hydrolysis of mannan

PURITY: > 95% (HPLC)

HPLC:

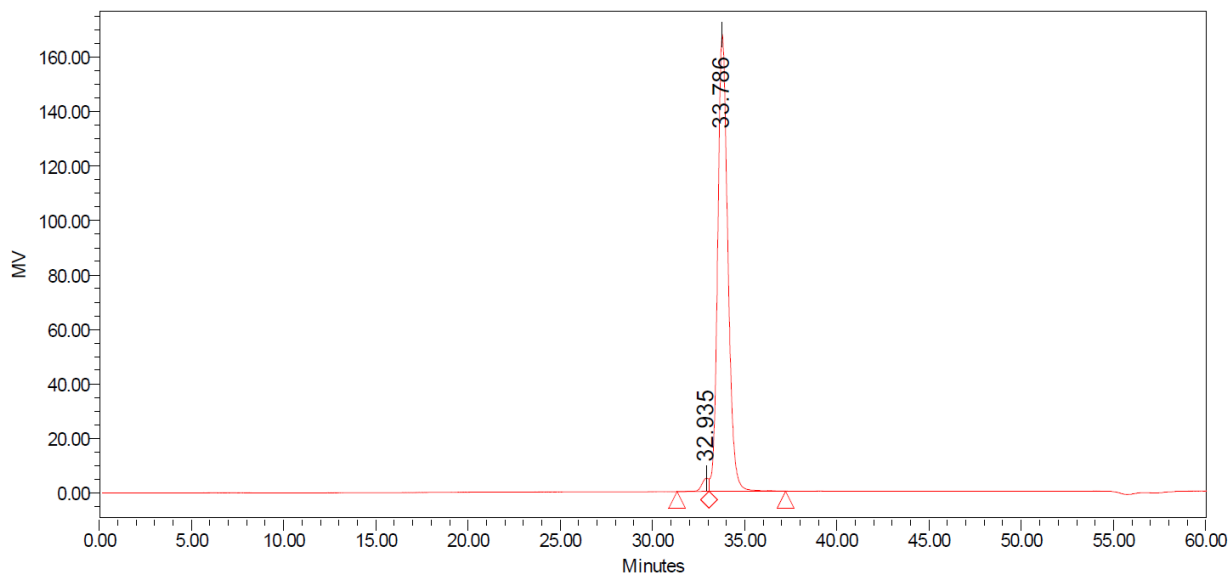
Column: 2 x Tosoh TSK-GEL G2500 PWXL (7.8 x 300 mm) plus guard column (7.8 x 35mm)

Temperature: 80°C

Mobile phase: dH_2O

Flow rate: 0.5 mL/min

HPLC System: Waters Alliance e2695 Separations Module, Waters 2414 RI detector and Empower v 3 software



Processed Channel: 410

	Processed Channel	Retention Time (min)	Area	% Area	Height
1	410	32.935	123293	1.88	4839
2	410	33.786	6420462	98.12	167782

HPAEC-PAD:

Column: CarboPac PA200 guard and analytical columns (3 x 250 mm)

Temperature: 30°C

Detector: Au electrode; waveform Carbohydrate, standard quad

Flow rate: 0.5 mL/min

IC system: Dionex ICS5000+ DP system and Chromeleon 7 software

A stepwise linear gradient method was employed as shown.

Time (min)	100 mM NaOH (%)	120 mM NaOAc (%) in 100mM NaOH
0	100	0
2	100	0
14	85	15
14.5	0	100

