



## 1,3-β-D-GALACTOSYL-D-GLUCOSE (Lot 170802)

O-LAC3

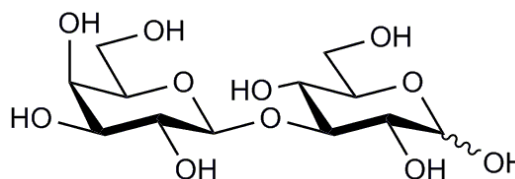
08/17

**Synonym:** 1,3-β-D-Lactose

**CAS:** 28447-38-3

**Molecular Formula:** C<sub>12</sub>H<sub>22</sub>O<sub>11</sub>

**MW:** 342.3



**PURITY:** > 95% (HPLC)

### HPLC:

Column: 2 x Tosoh TSK-GEL G2500 PWXL (7.8 x 300 mm) plus guard column (7.8 x 35 mm)

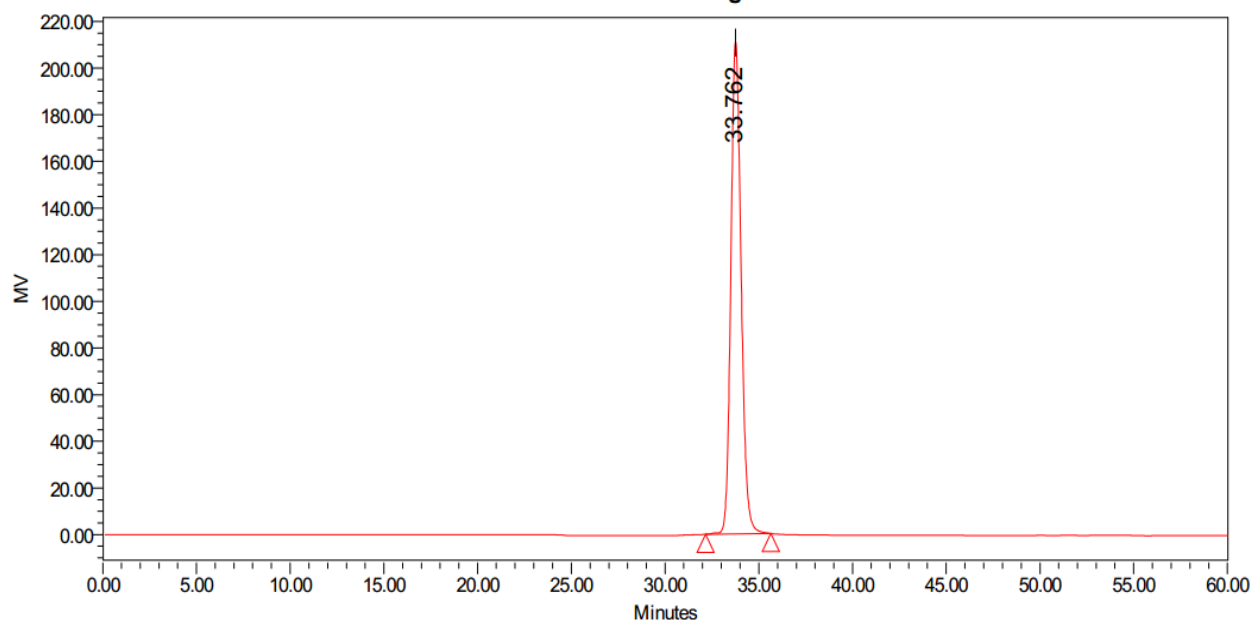
Temperature: 80°C

Mobile phase: dH<sub>2</sub>O

Flow rate: 0.5 mL/min

HPLC System: Waters Alliance e2695 Separations Module, Waters 2414 RI detector and Empower v 3 software

Auto-Scaled Chromatogram



Processed Channel: 410

	Processed Channel	Retention Time (min)	Area	% Area	Height
1	410	32.762	8017978	100.00	210744

**HPAEC-PAD:**

Column: CarboPac PA200 guard and analytical columns (3 × 250 mm)

Temperature: 20°C

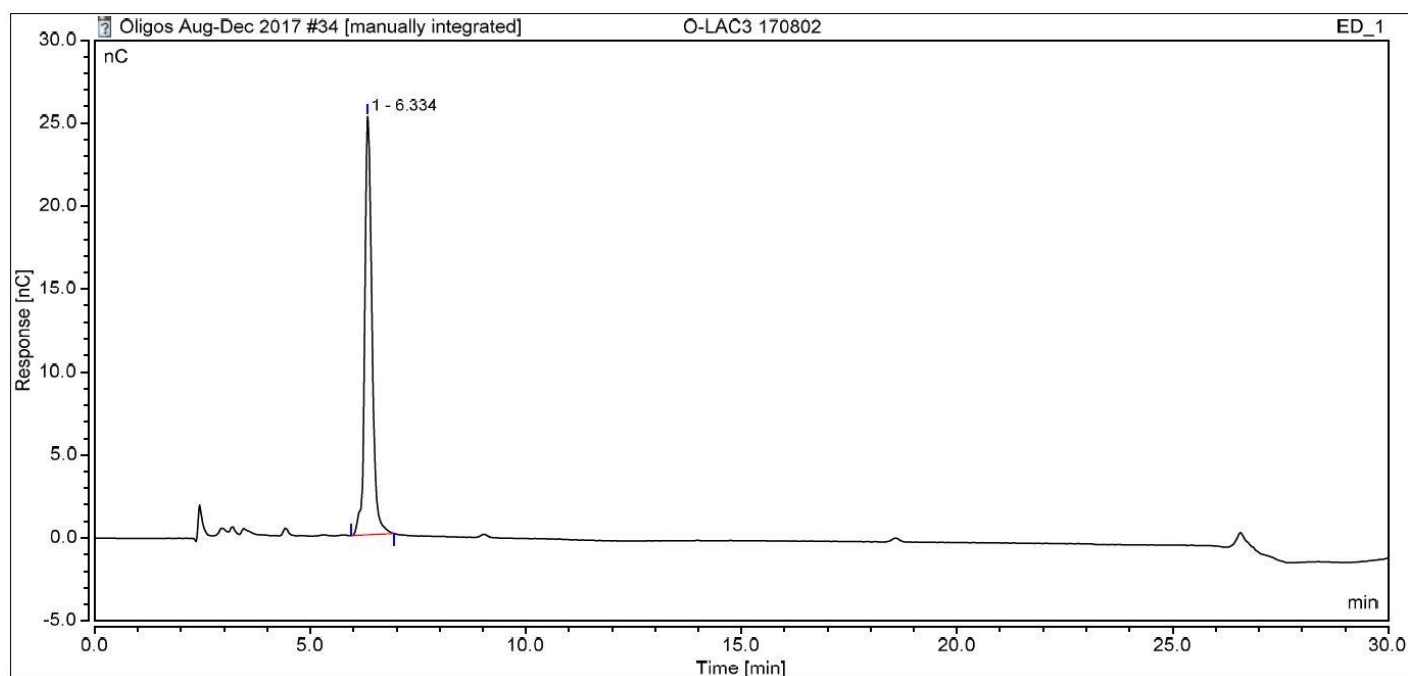
Detector: Au electrode; waveform Carbohydrate, standard quad

Flow rate: 0.4 mL/min

IC system: Dionex ICS5000 + DP system and Chromeleon 7 software

A stepwise linear gradient method was employed as shown.

Time (min)	100 mM NaOH (%)	120 mM NaOAc in 100 mM NaOH (%)
0	100	0
4	100	0
22	95	5
23	0	100
25	0	100
26	100	0
30	100	0

**TLC:**n-Propanol: Ethanol: H<sub>2</sub>O = 7:1:2 (run once) on Merck TLC Silicagel 60F<sub>254</sub>