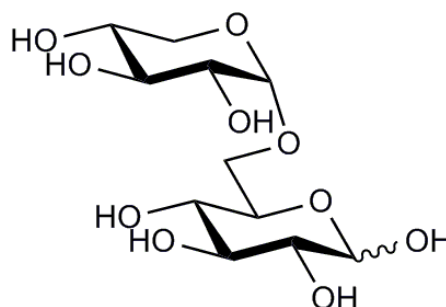


ISOPRIMEVEROSE (Lot I20402a)

O-IPRM

03/19

Molecular Formula: $C_{11}H_{20}O_{10}$
MW: 312.3
CAS: 534-98-5



PREPARATION:

Prepared by controlled enzymic hydrolysis of xyloglucan.

PURITY: > 95% (HPLC)

HPLC:

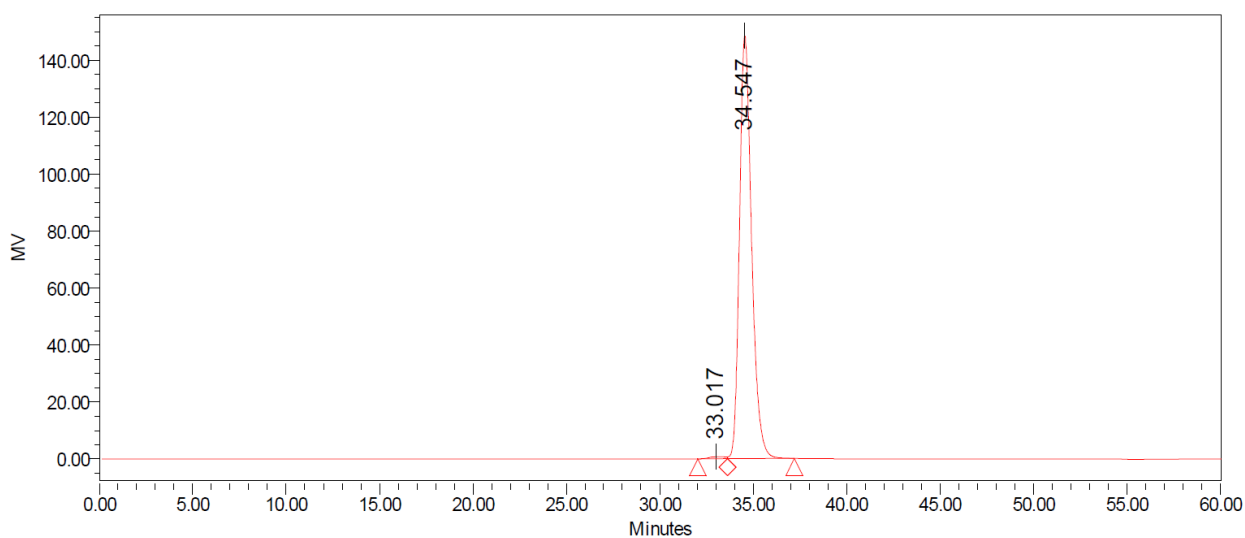
Column: 2 x Tosoh TSK-GEL G2500 PWXL (7.8 x 300 mm) plus guard column (7.8 x 35mm)

Temperature: 80°C

Mobile phase: dH_2O

Flow rate: 0.5 mL/min

HPLC System: Waters Alliance e2695 Separations Module, Waters 2414 RI detector and Empower v 3 software



Processed Channel: 410

	Processed Channel	Retention Time (min)	Area	% Area	Height
1	410	33.017	44583	0.66	726
2	410	34.547	6681627	99.34	148487

HPAEC-PAD:

Column: CarboPac PA200 guard and analytical columns (3 x 250 mm)

Temperature: 30°C

Detector: Au electrode; waveform Carbohydrate, standard quad

Flow rate: 0.5 mL/min

IC system: Dionex ICS5000+ DP system and Chromeleon 7 software

A stepwise linear gradient method was employed as shown.

Time (min)	100 mM NaOH (%)	120 mM NaOAc (%) in 100mM NaOH
0	100	0
14	75	25
15	50	50
25	30	70
26	0	100

