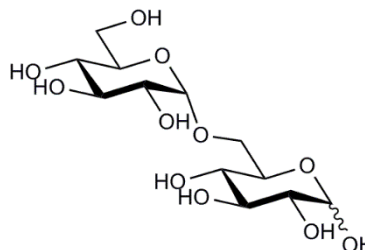


ISOMALTOSE

06/23

O-IMO2

CAS: 499-40-1
Molecular Formula: C₁₂H₂₂O₁₁
MW: 342.3



This oligosaccharide is not a certified reference material. The purity stated for this compound in the relevant Certificate of Analysis is not a % w/w purity, but a purity based on the HPLC peak area relative to other oligosaccharide compounds visible in the chromatograph.

Refer to the product lot number Certificate of Analysis for lot specific properties.