



6'-GALACTOSYLLACTOSE (Lot 200703)

O-GLAC6

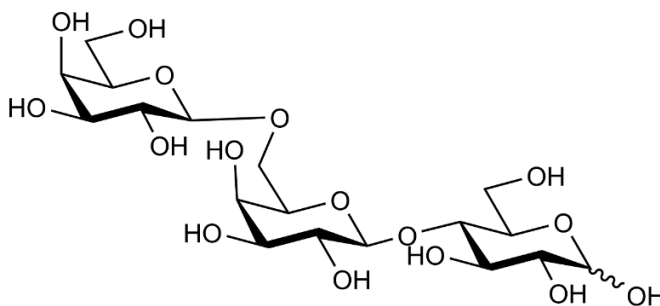
07/20

CAS: 32581-31-0

Molecular

Formula: C₁₈H₃₂O₁₆

MW: 504.4



PURITY: > 90% (HPLC)

HPLC:

Column: Shodex Asahipak NH2P-40 3E analytical column

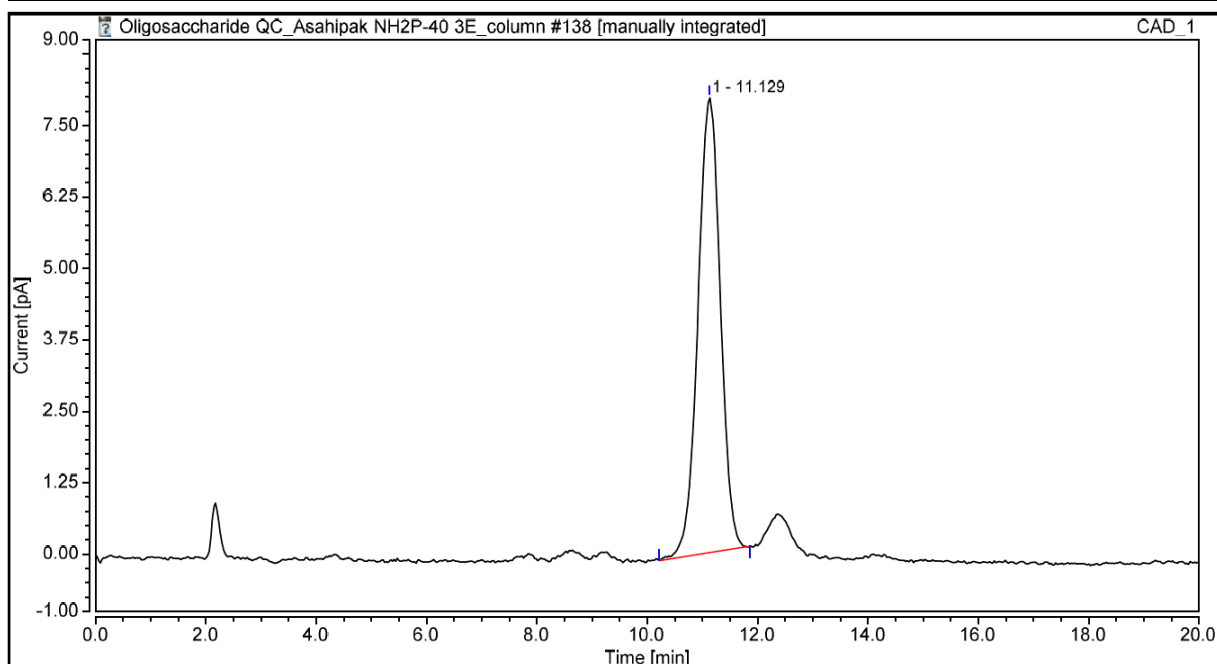
Temperature: 35°C

Flow rate: 0.35 mL/min (Eluent gradient shown below)

Detector: CAD (Charged Aerosol Detector)

HPLC System: Thermofisher U3000 Ultimate and Chromeleon v 7.0 software

Time (min)	H ₂ O (%)	CH ₃ CN (%)
0	30	70
20	30	70



HPAEC-PAD:

Column: CarboPac PA200 guard and analytical columns (3 x 250 mm)

Temperature: 20°C

Detector: Au electrode; waveform Carbohydrate, standard quad

Flow rate: 0.5 mL/min

IC system: Dionex ICS5000 + DP system and Chromeleon 7 software

A stepwise linear gradient method was employed as shown.

Time (min)	100 mM NaOH (%)	120 mM NaOAc (%) in 100 mM NaOH
0	100	0
4	100	0
22	5	95
23	0	100
25	0	100
26	100	0
30	100	0

