

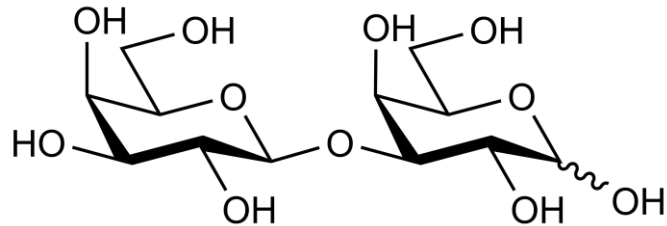


## 1, 3-β-D-GALACTOBIOSE (Lot 170502)

**O-GBI3**

**07/17**

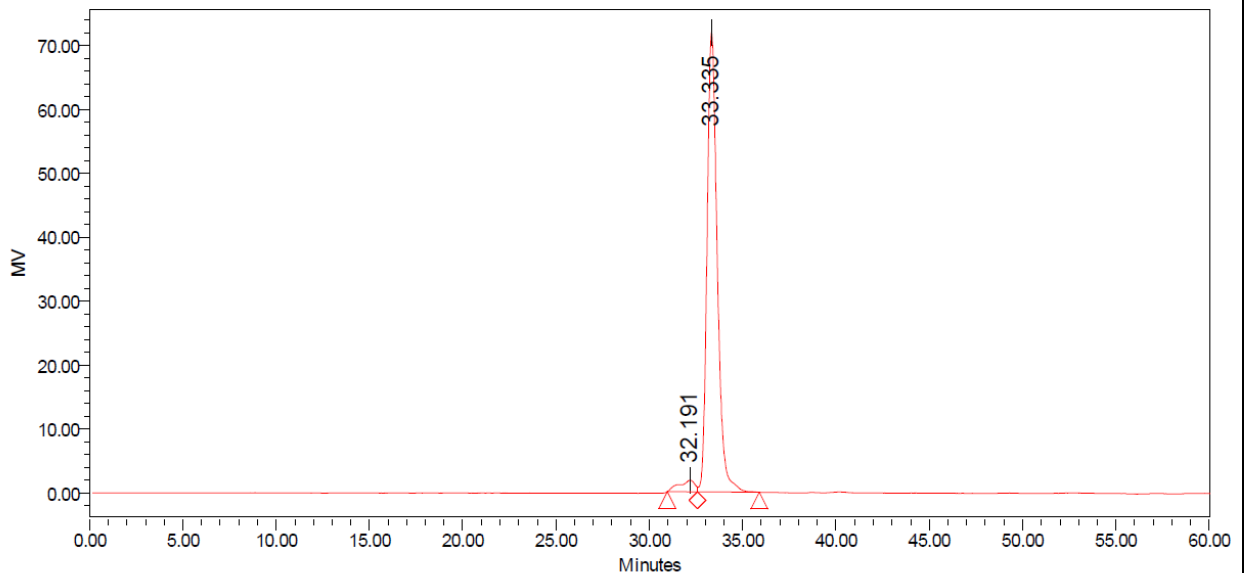
**CAS:** 5188-48-7  
**Molecular Formula:** C<sub>12</sub>H<sub>22</sub>O<sub>11</sub>  
**MW:** 342.3



**PURITY:** > 95% (HPLC)

**HPLC:**

Column: 2 x Tosoh TSK-GEL G2500 PWXL (7.8 x 300 mm) plus guard column (7.8 x 35 mm)  
 Temperature: 80°C  
 Mobile phase: dH<sub>2</sub>O  
 Flow rate: 0.5 mL/min  
 HPLC System: Waters Alliance e2695 Separations Module, Waters 2414 RI detector and Empower v 3 software



**Processed Channel: 410**

	Processed Channel	Retention Time (min)	Area	% Area	Height
1	410	32.191	107536	3.79	1837
2	410	33.335	2733261	96.21	71876

**HPAEC-PAD:**

Column: CarboPac PA200 guard and analytical columns (3 x 250 mm)

Temperature: 20°C

Detector: Au electrode; waveform Carbohydrate, standard quad

Flow rate: 0.4 mL/min

IC system: Dionex ICS5000 + DP system and Chromeleon 7 software

A stepwise linear gradient method was employed as shown.

Time (min)	100 mM NaOH (%)	120 mM NaOAc in 100 mM NaOH (%)
0	100	0
4	100	0
22	95	15
23	0	100
25	0	100
26	100	0
30	100	0

