

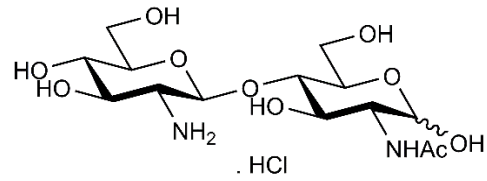


1,4-β-D-Glucosaminyl-D-N-Acetylglucosamine (HCl) (Lot 181102)

O-CHIN2

11/18

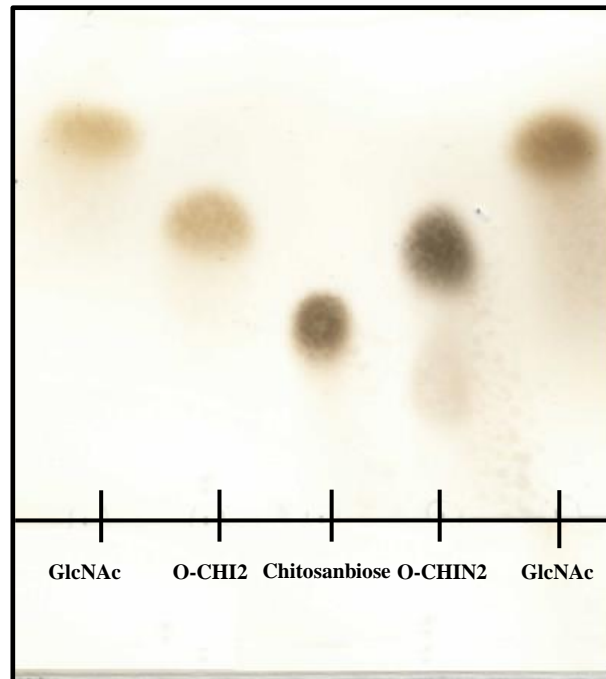
CAS: 104584-15-8
Molecular Formula: C₁₄H₂₆N₂O₁₀
MW: 418.82



PURITY: > 90% (TLC)

TLC:

n-Propanol:H₂O:Ammonia = 70:30:1 (run once) on Merck TLC Silicagel 60F₂₅₄



HPAEC-PAD:

Column: CarboPac PA200 guard and analytical columns (3 x 250 mm)

Temperature: 30°C

Detector: Au electrode; waveform Carbohydrate, standard quad

Flow rate: 0.4 mL/min

IC system: Dionex ICS5000 + DP system and Chromeleon 7 software

A stepwise linear gradient method was employed as shown.

Time (min)	100 mM NaOH (%)	120 mM NaOAc in 100 mM NaOH (%)	H ₂ O (%)
0	25	0	75
10	25	0	75
22	23	2	75
23	0	50	50
25	0	100	0
26	25	0	75
30	25	0	75

