

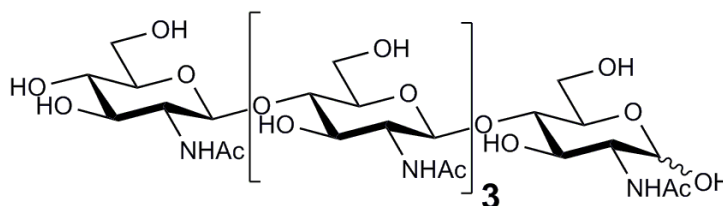


PENTAACETYL-CHITOPENTAOSE (Lot 190705)

O-CHI5

08/18

Molecular Formula: $C_{40}H_{67}N_5O_{26}$
MW: 1034.0
CAS: 36467-68-2



PREPARATION:

Prepared by controlled acid hydrolysis of chitin.

PURITY: > 95% (HPLC)

HPLC:

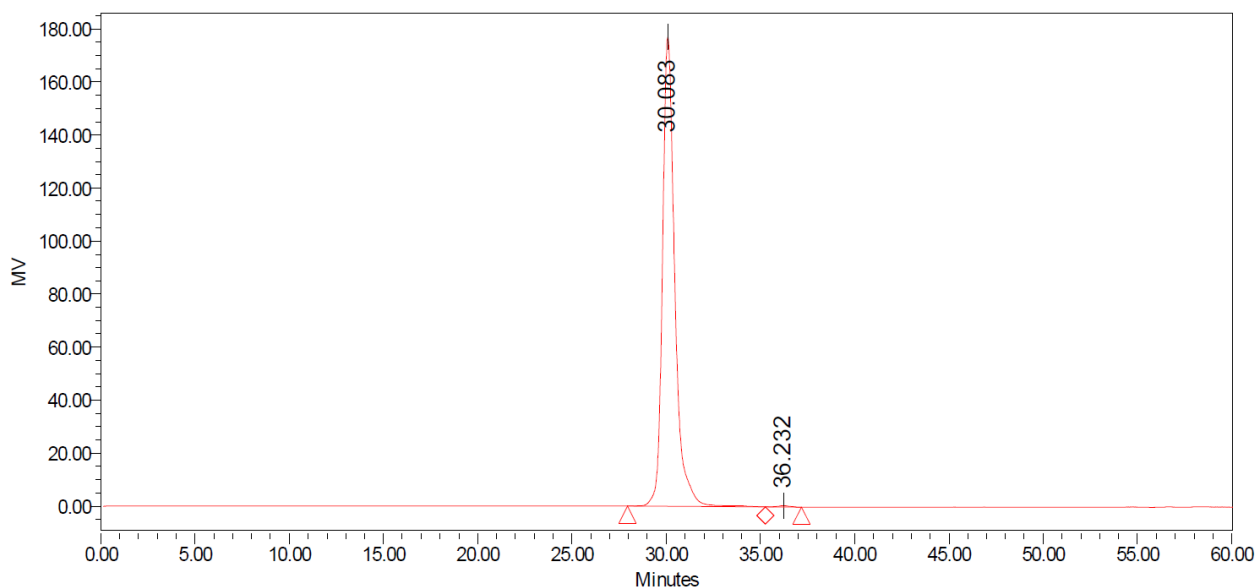
Column: 2 x Tosoh TSK-GEL G2500 PWXL (7.8 x 300 mm) plus guard column (7.8 x 35 mm)

Temperature: 80°C

Mobile phase: dH_2O

Flow rate: 0.5 mL/min

HPLC System: Waters Alliance e2695 Separations Module, Waters 2414 RI detector and Empower v 3 software



Processed Channel: 410

	Processed Channel	Retention Time (min)	Area	% Area	Height
1	410	30.083	8030095	99.75	177011
2	410	36.232	20041	0.25	459