

## CELLOHEXAOSE

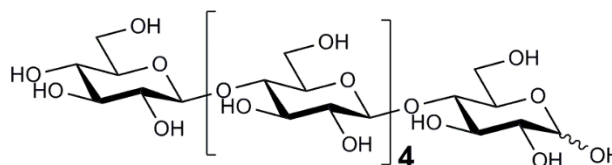
06/23

## O-CHE

CAS: 2478-35-5

Molecular Formula:  $C_{36}H_{62}O_{31}$ 

MW: 990.9



This oligosaccharide is not a certified reference material. The purity stated for this compound in the relevant Certificate of Analysis is not a % w/w purity, but a purity based on the HPLC peak area relative to other oligosaccharide compounds visible in the chromatograph.

Refer to the product lot number Certificate of Analysis for lot specific properties.