

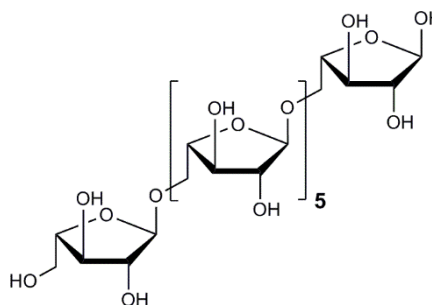


ARABINOHEPTAOSE (Lot 100907a)

O-AHP

09/19

Molecular Formula: $C_{35}H_{58}O_{29}$
MW: 924.8
CAS: 190852-27-8



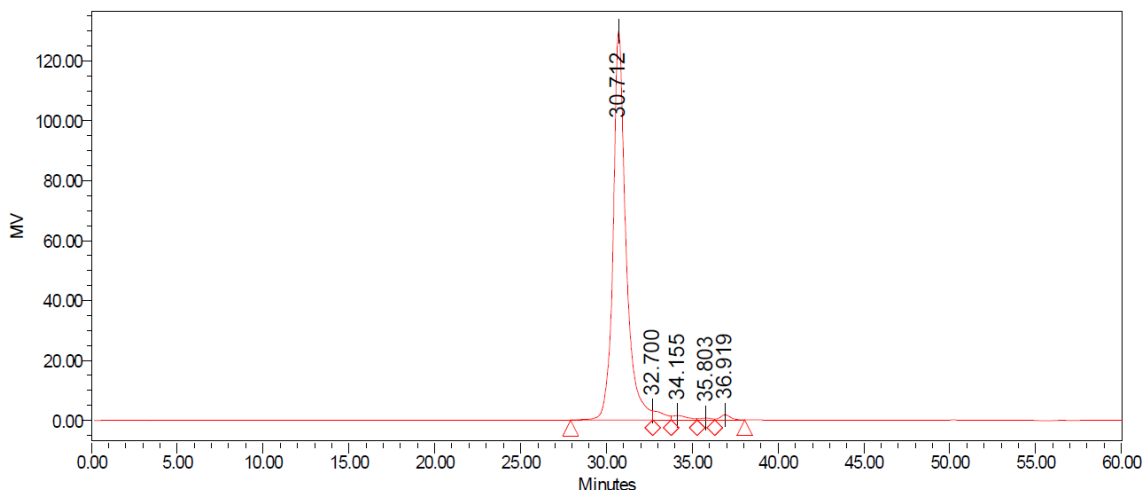
PREPARATION:

Prepared by controlled enzymic hydrolysis of debranched sugar beet arabinan.

PURITY: > 95% (HPLC)

HPLC:

Column: 2 x Tosoh TSK-GEL G2500 PWXL (7.8 x 300 mm) plus guard column (7.8 x 35mm)
 Temperature: 80°C
 Mobile phase: dH₂O
 Flow rate: 0.5 mL/min
 HPLC System: Waters Alliance e2695 Separations Module, Waters 2414 RI detector and Empower v 3 software



Processed Channel: 410

	Processed Channel	Retention Time (min)	Area	% Area	Height
1	410	30.712	6704488	95.28	129768
2	410	32.700	141909	2.02	3039
3	410	34.155	89778	1.28	1495
4	410	35.803	29743	0.42	615
5	410	36.919	70332	1.00	1704

TLC:

n-Propanol:Ethanol:H₂O = 7:1:2 (run once) on Merck TLC Silicagel 60F₂₅₄

