

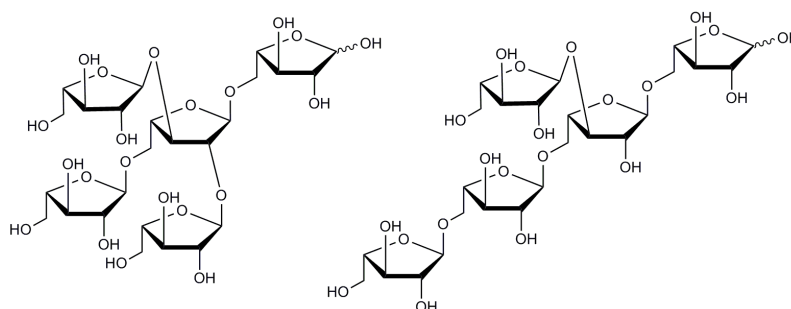


2²,3²-di- α -L-Arabinofuranosyl-(1,5)- α -L-arabinotriose plus 3²- α -L-arabinofuranosyl-(1,5)- α -L-arabinotetraose (Lot 150605a)

O-A5BMIX

02/19

Molecular Formula: C₂₅H₄₂O₂₁
MW: 678.6
CAS: 1237488-32-2



PREPARATION:

Prepared by controlled enzymic hydrolysis of debranched sugar beet arabinan

PURITY: > 70% (~ 1:1 ratio of two pentasaccharides)

HPLC:

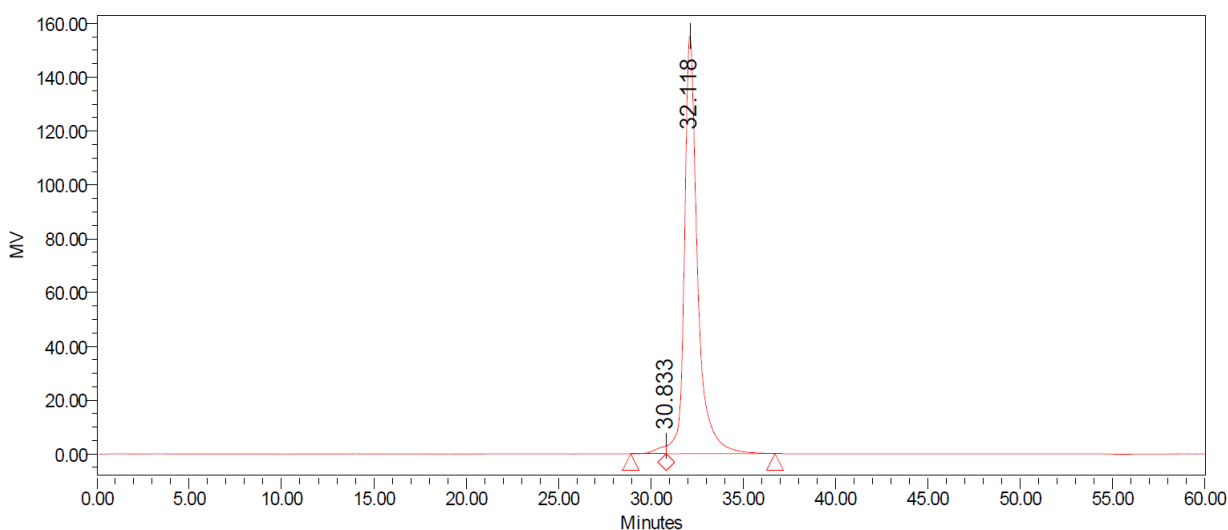
Column: 2 x Tosoh TSK-GEL G2500 PWXL (7.8 x 300 mm) plus guard column (7.8 x 35mm)

Temperature: 80°C

Mobile phase: dH₂O

Flow rate: 0.5 mL/min

HPLC System: Waters Alliance e2695 Separations Module, Waters 2414 RI detector and Empower v 3 software



Processed Channel: 410

	Processed Channel	Retention Time (min)	Area	% Area	Height
1	410	30.833	109723	1.42	2902
2	410	32.118	7640980	98.58	155254

HPAEC-PAD:

Column: CarboPac PA200 guard and analytical columns (3 x 250 mm)

Temperature: 30°C

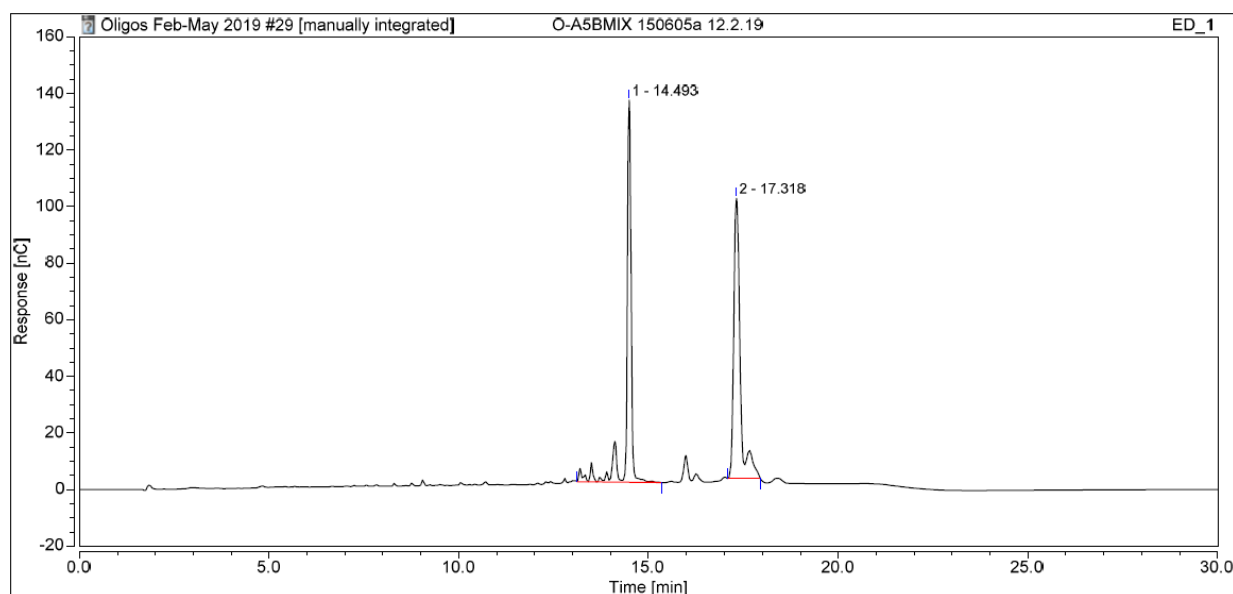
Detector: Au electrode; waveform Carbohydrate, standard quad

Flow rate: 0.5 mL/min

IC system: Dionex ICS5000+ DP system and Chromeleon 7 software

A stepwise linear gradient method was employed as shown.

Time (min)	100 mM NaOH (%)	120 mM NaOAc (%) in 100mM NaOH
0	100	0
5	55	45
9	30	70
10	0	100
18	0	100
19	100	0
30	100	0



TLC:

Ethyl acetate : Acetic acid : H₂O = 2:1:1 (run once) on Merck TLC Silica gel 60F₂₅₄

