

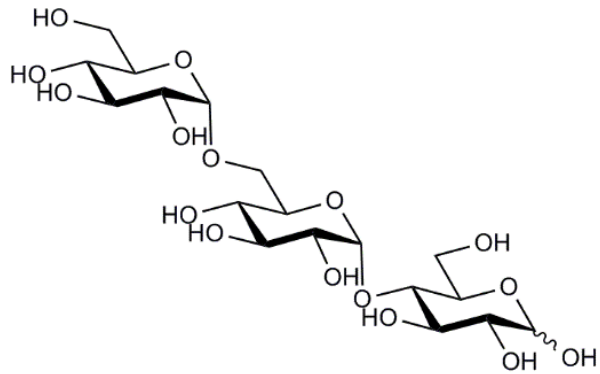


PANOSE (Lot 160303a)

O-PAN-250MG

03/16

CAS: 33401-87-5
Molecular Formula: $C_{18}H_{32}O_{16}$
MW: 504.4



PURITY: > 97%

HPLC:

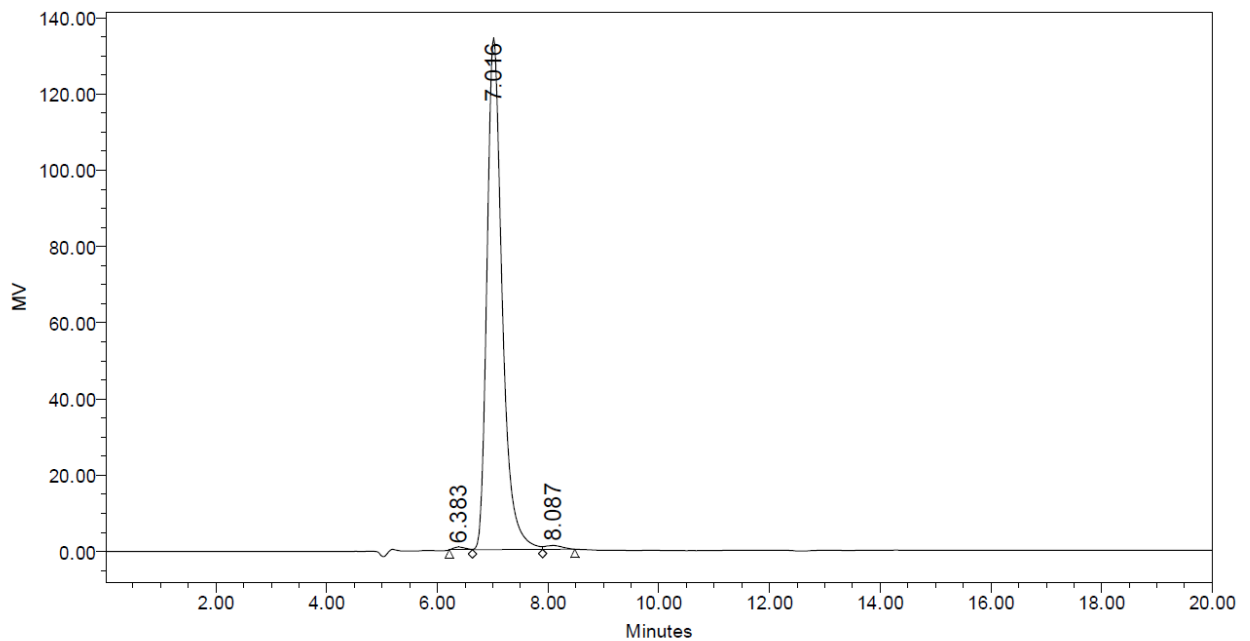
Column :- Waters SugarPak I (6.5 x 300 mm)

Temperature :- 90°C

Mobile phase :- dH_2O with disodium calcium EDTA (50 mg/L) [Sigma Cat No. ED2SC]

Flow rate :- 0.5 mL/min

HPLC system :- Waters Breeze system, Waters 2410 RI detector and Empower v 2 software



	RT	Area	% Area	Height
1	6.383	10291	0.40	719
2	7.016	2556505	98.77	134161
3	8.087	21476	0.83	997

HPAEC-PAD:

Column :- CarboPac PA200 guard and analytical columns (3 x 250 mm).

Temperature :- 30°C

Detector :- Au electrode; waveform Carbohydrate, standard quad

Flow rate :- 0.5 mL/min

IC system :- Dionex ICS5000 + DP system and Chromeleon 7 software.

A stepwise linear gradient method was employed as shown.

Time (min)	100 mM NaOH (%)	120 mM NaOAc in 100 mM NaOH (%)
0	100	0
5	55	45
9	30	70
10	0	100
18	0	100
19	100	0
30	100	0

