



1,4-β-D-GALACTOBIOSE (Lot 130102a)

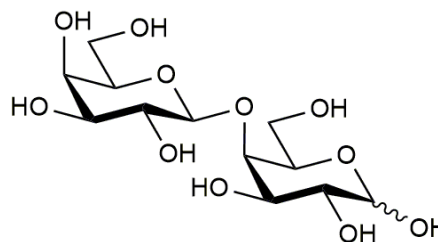
O-GBI4-50MG

04/17

CAS: 2152-98-9 /
6206-28-6

**Molecular
Formula:** C₁₂H₂₂O₁₁

MW: 342.3



PURITY: > 95%

HPLC:

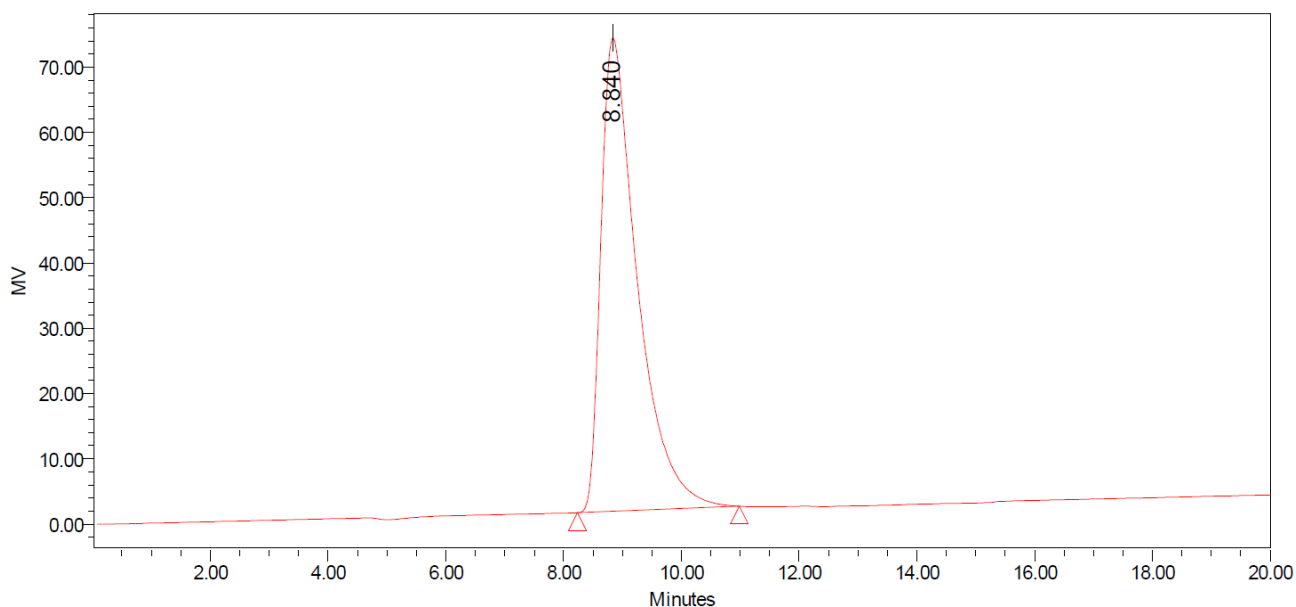
Column: Waters SugarPak I (6.5 x 300 mm)

Temperature: 90°C

Mobile phase: dH₂O with disodium calcium EDTA (50 mg/L) [Sigma Cat No. ED2SC]

Flow rate: 0.5 mL/min

HPLC System: Waters Breeze system, Waters 2410 RI detector and Empower v 3 software



Peak Name:

Injection	RT	Area	% Area	Height
1	1 8.840	3121790	100.00	72546

HPAEC-PAD:

Column: CarboPac PA200 guard and analytical columns (3 x 250 mm)

Temperature: 30°C

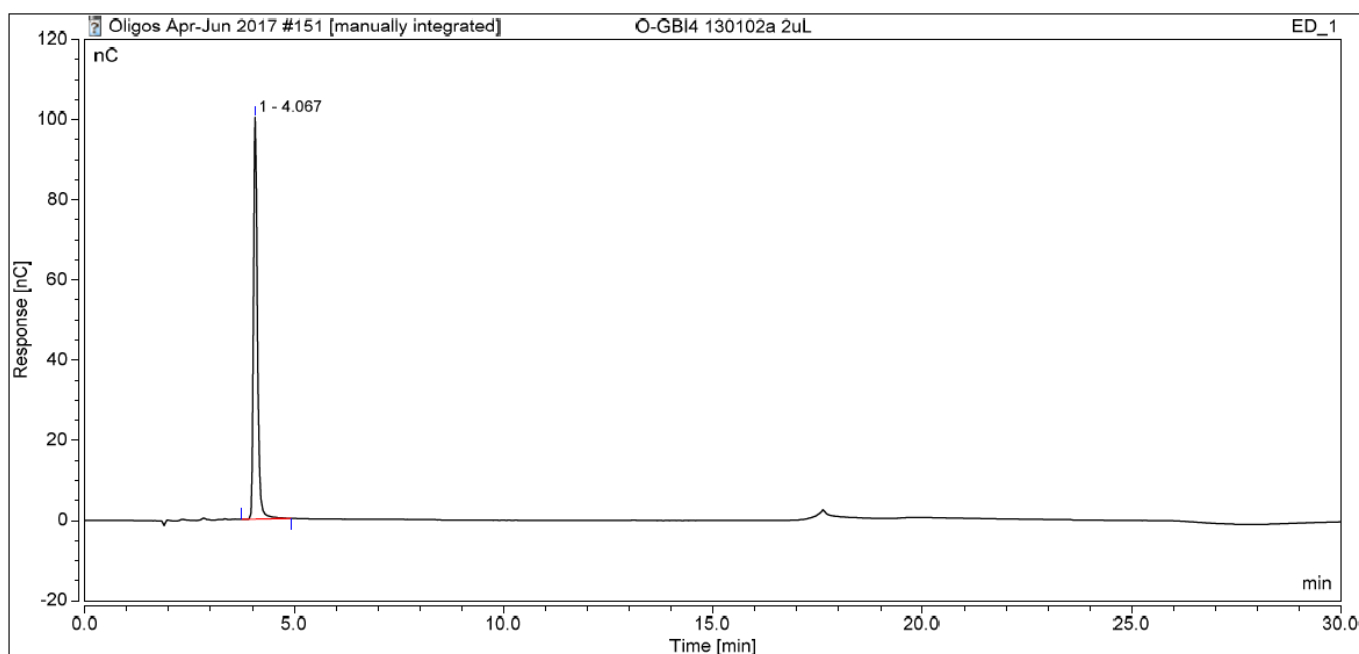
Detector: Au electrode; waveform Carbohydrate, standard quad

Flow rate: 0.5 mL/min

IC system: Dionex ICS5000+ DP system and Chromeleon 7 software

A stepwise linear gradient method was employed as shown.

Time (min)	100 mM NaOH (%)	120 mM NaOAc (%) in 100 mM NaOH
0	100	0
2	100	0
14	85	15
14.5	0	100
23	0	100
24	100	0
30	100	0

**TLC:** n -Propanol:Ethanol:H₂O = 7:1:2 (run once) on Merck TLC Silicagel 60F₂₅₄