

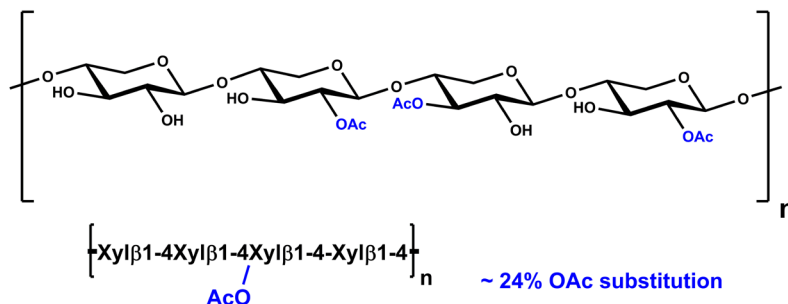


XYLAN (BIRCHWOOD, PARTIALLY ACETYLATED) (Lot 191001)

CAT. NO: P-ACXYL
CAS: N/A
Source: Birchwood

02/20

STRUCTURE



Schematic representation of a partially acetylated xylan subunit composed by partially acetylated β -(1,4)-linked xylose monosaccharides.

PROPERTIES

Degree of Acetylation: ~ 24 %
Moisture: < 7.5%
Physical Description: Brown powder
Solubility: > 200 mg/mL

STORAGE CONDITIONS

Store dry at room temperature in a well-sealed container. Under these conditions, the product is stable for several years.

HPAEC-PAD:

Column: CarboPac PA200 guard and analytical columns (3 x 250 mm)

Temperature: 30°C

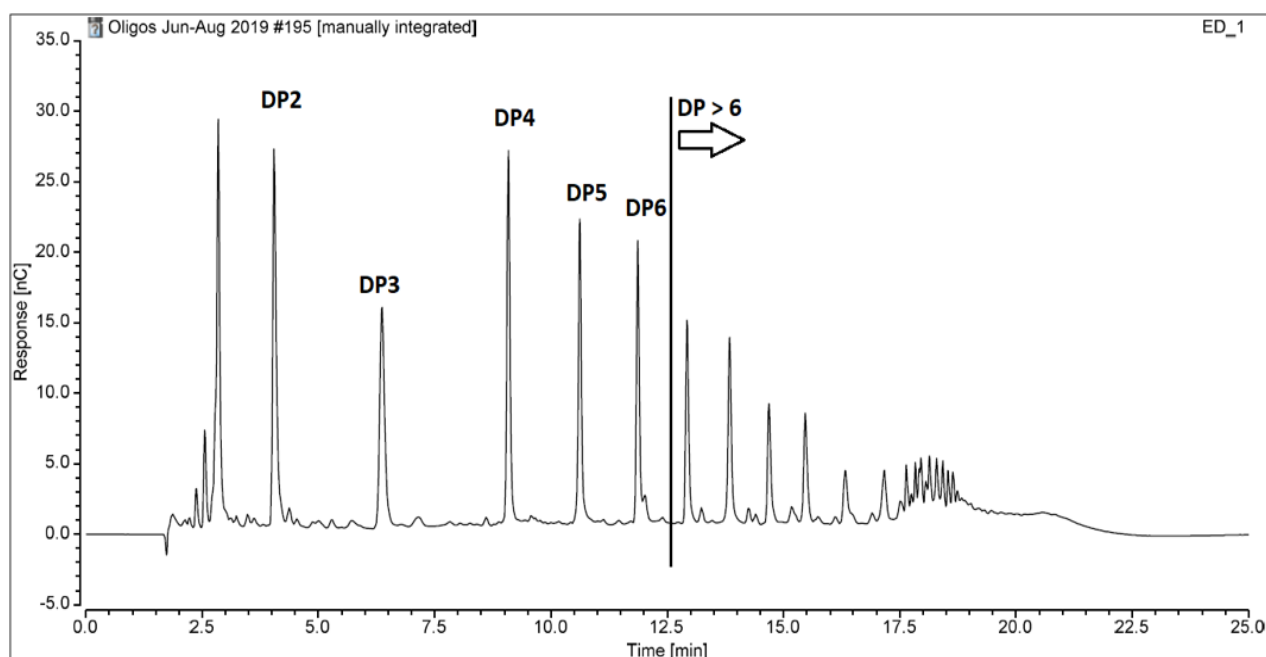
Detector: Au electrode; waveform Carbohydrate, standard quad

Flow rate: 0.5 mL/min

IC system: Dionex ICS5000 + DP system and Chromeleon 7 software

A stepwise linear gradient method was employed as shown.

| Time (min) | 100 mM NaOH (%) | 320 mM NaOAc in 100 mM NaOH (%) |
|------------|-----------------|---------------------------------|
| 0 | 100 | 0 |
| 2 | 100 | 0 |
| 10 | 65 | 35 |
| 14 | 50 | 50 |
| 15 | 0 | 100 |
| 18 | 0 | 100 |
| 19 | 100 | 0 |
| 25 | 100 | 0 |



The HPAEC-PAD graph shows the xylo-oligosaccharides components devoid of acetyl groups which are hydrolysed by the NaOH present in the eluents. The graph is indicative of the DP spread of xylo-oligosaccharides present in this product.