

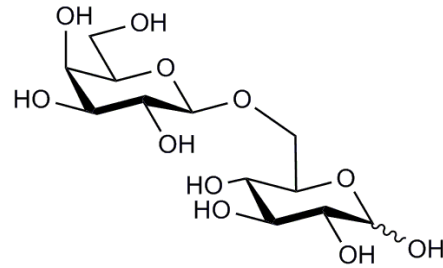


ALLOLACTOSE (1,6- β -D-GALACTOSYL-D-GLUCOSE) (Lot 170402)

O-LAC6

05/17

CAS: 28447-39-4
Molecular Formula: $C_{12}H_{22}O_{11}$
MW: 342.3



PURITY: > 95% (HPLC)

HPLC:

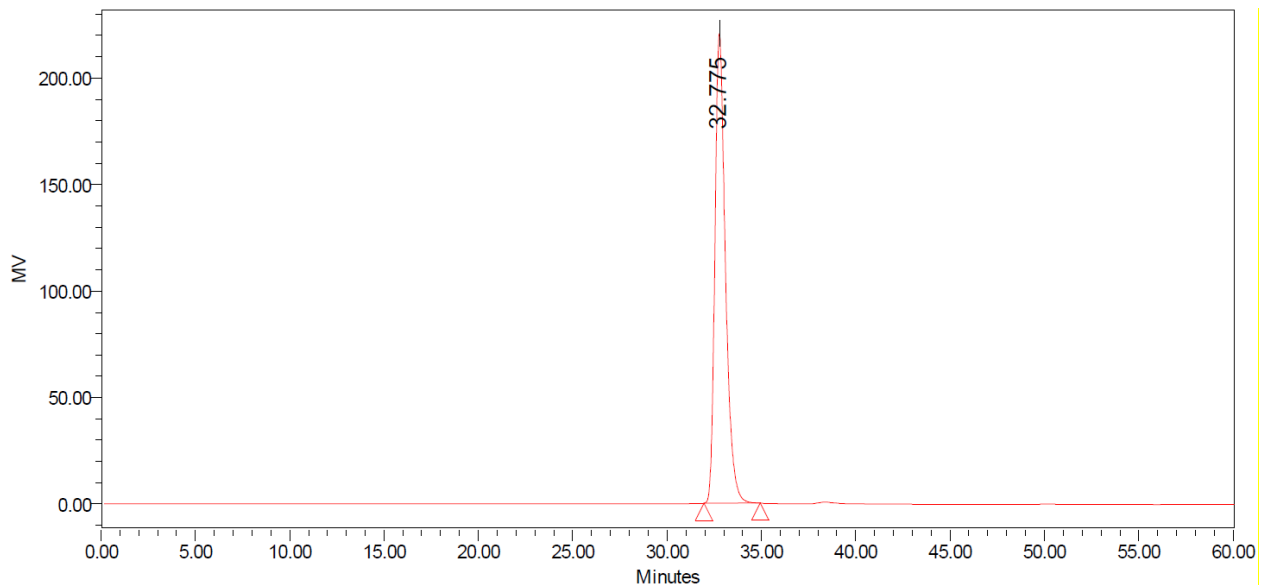
Column: 2 x Tosoh TSK-GEL G2500 PWXL (7.8 x 300 mm) plus guard column (7.8 x 35 mm)

Temperature: 80°C

Mobile phase: dH_2O

Flow rate: 0.5 mL/min

HPLC System: Waters Alliance e2695 Separations Module, Waters 2414 RI detector and Empower v 3 software



Processed Channel: 410

	Processed Channel	Retention Time (min)	Area	% Area	Height
1	410	32.775	8531436	100.00	220590

HPAEC-PAD:

Column: CarboPac PA200 guard and analytical columns (3 × 250 mm)

Temperature: 20°C

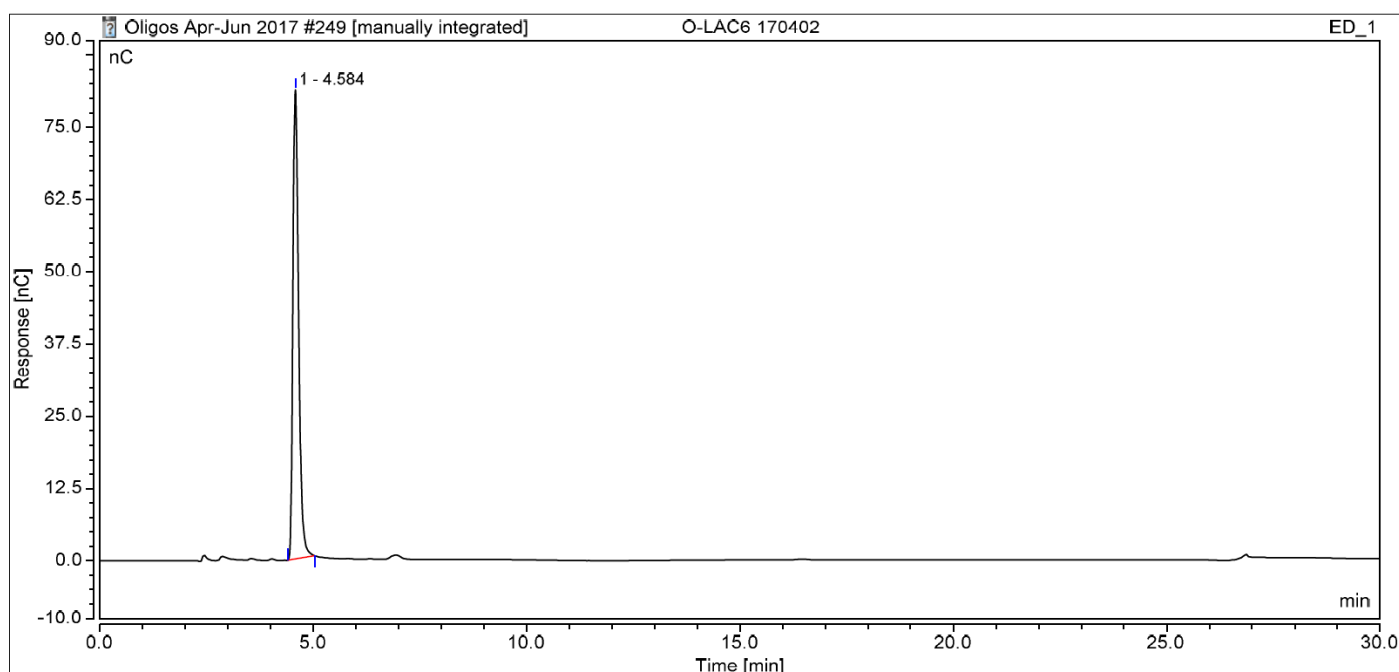
Detector: Au electrode; waveform Carbohydrate, standard quad

Flow rate: 0.4 mL/min

IC system: Dionex ICS5000 + DP system and Chromeleon 7 software

A stepwise linear gradient method was employed as shown.

Time (min)	100 mM NaOH (%)	120 mM NaOAc in 100 mM NaOH (%)
0	100	0
4	100	0
22	95	5
23	0	100
25	0	100
26	100	0
30	100	0

**TLC:***n*-Propanol: Ethanol: H₂O = 7:1:2 (run once) on Merck TLC Silicagel 60F₂₅₄