



## ARABINO GALACTAN (LARCH) (Lot 20701)

09/2002

### PREPARATION:

Crude larch arabinogalactan is obtained from larch trees. This is purified by ultrafiltration to remove low molecular weight sugars. Typically, the arabinose: galactose ratio is 15: 85.

### DISSOLUTION:

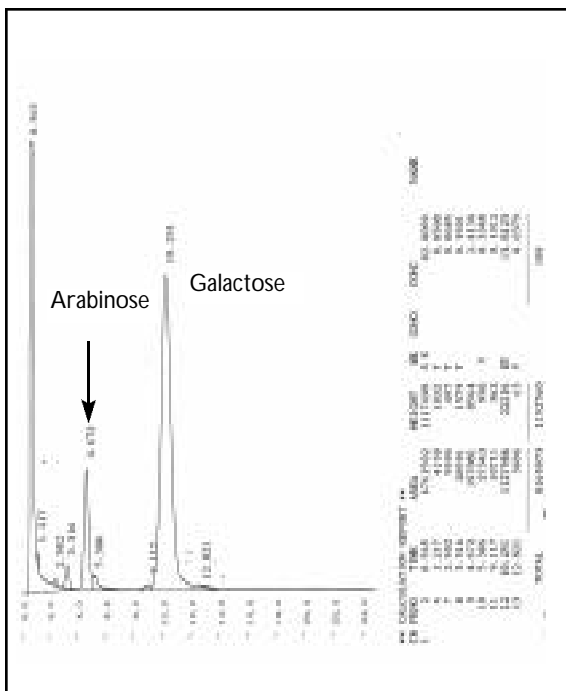
Arabinogalactan dissolves readily in cold water. Microbial contamination is prevented by the addition of a few drops of toluene to the container. Store at 4°C.

### Sugar Composition (Lot Number 01001).

Galactose	:	81
Arabinose	:	14
Other Sugars	:	5

For Use as a Dietary Fibre Control material.

### Glc trace of alditol acetates:



Chromatography of purified larch arabinogalactan on Bio-Gel P-2.

